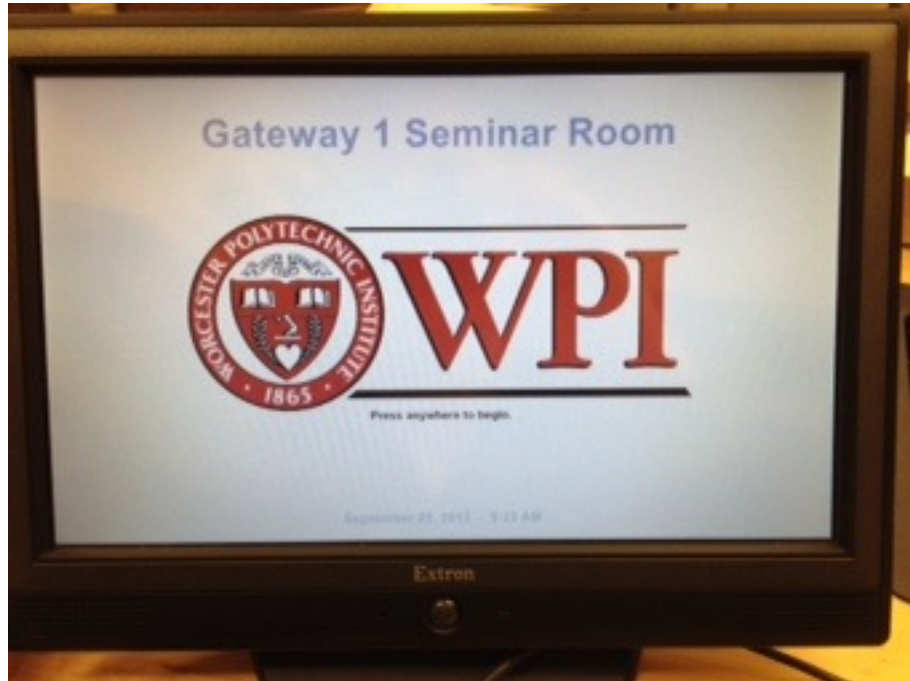
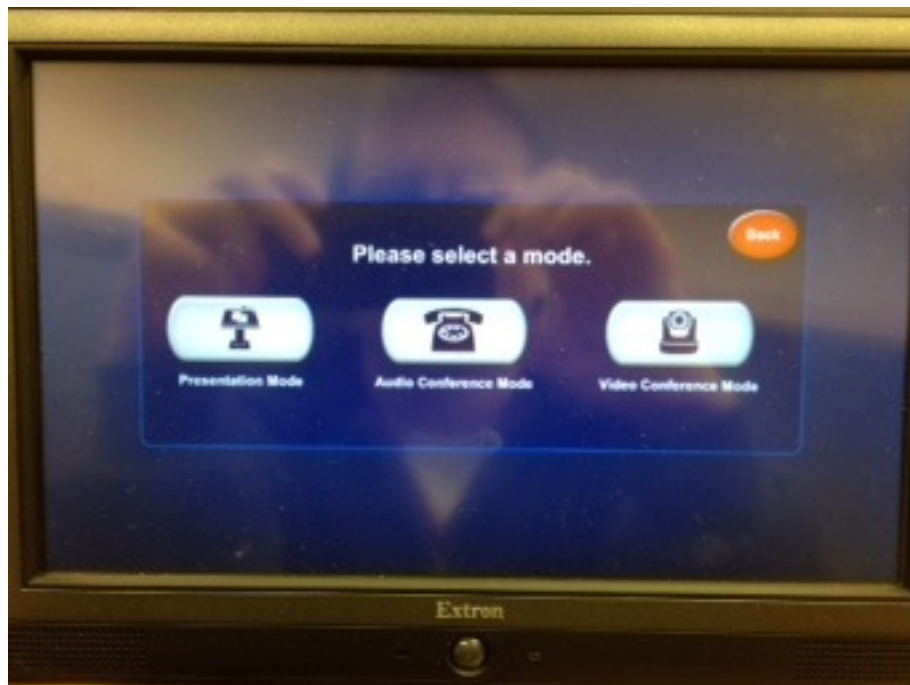


GATEWAY 1002

AV INSTRUCTIONS



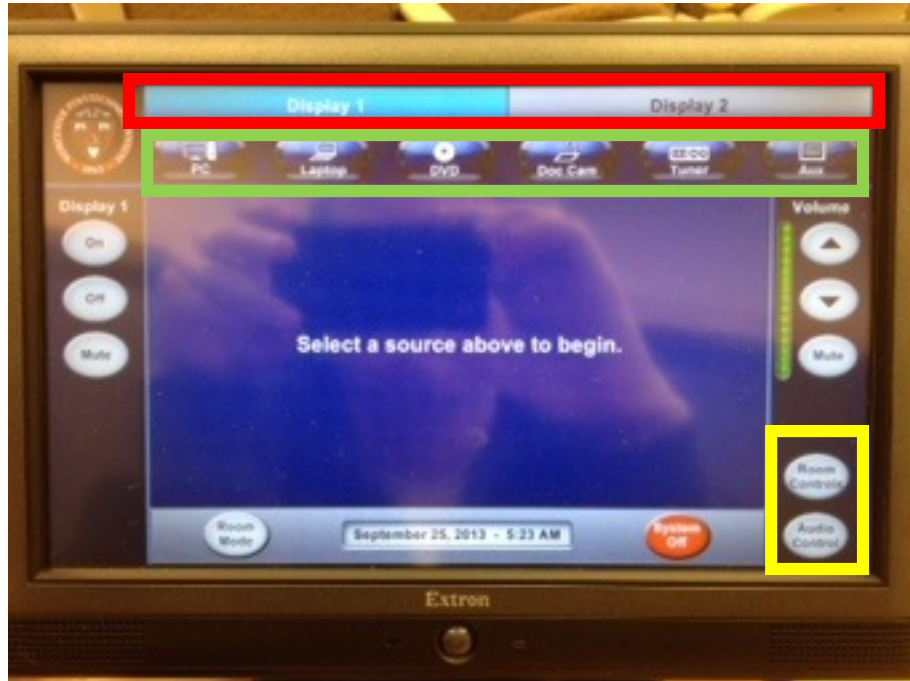
Touch the WPI Logo to begin using the AV system.



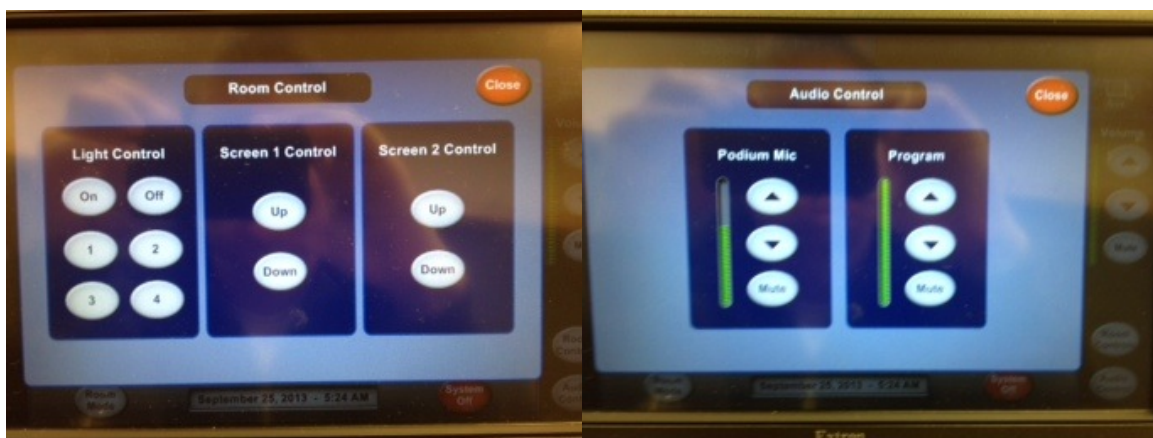
Touch **Presentation Mode** to use the projector and computer. If you want to use the phone conference setup in the room, touch **Audio Conference Mode** or **Video Conference Mode**.

GATEWAY 1002

AV INSTRUCTIONS



Once the projector in the room has powered on, touch the **Display** buttons (highlighted in red) at the top to lower the screens that you wish to display your video sources on. You can change the source of the selected screen by touching one of the **Source** buttons (highlighted in green): **PC, Laptop, DVD, Doc Cam, Tuner, or Aux.**



By touching **Room Control** or **Audio Control** (highlighted in yellow above), you bring up their respective controls.

GATEWAY 1002

AV INSTRUCTIONS



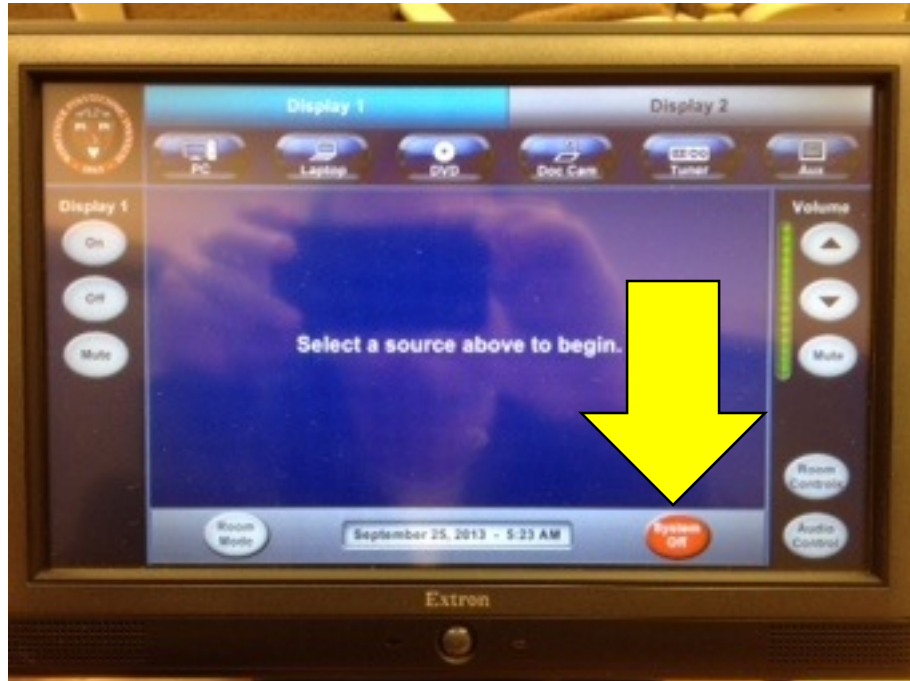
When you select **Aux**, **DVD**, or **Doc Cam** from the **Source** buttons, you are presented with additional control options.



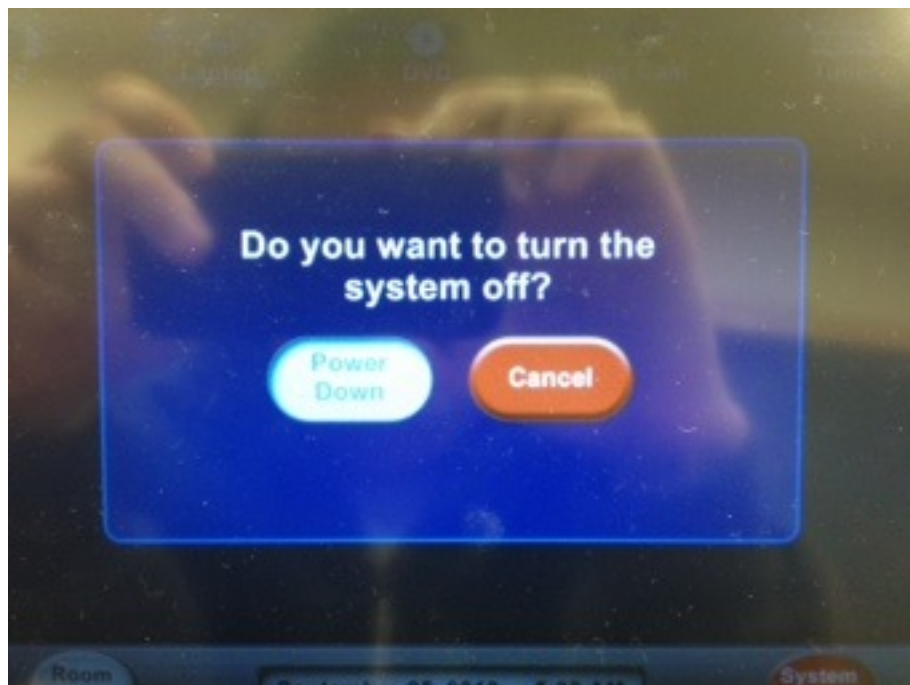
If you are in **Audio Conference Mode**, you are able to place calls using the podium. Dial 9 and then a phone number to reach any local or toll-free outside number.

GATEWAY 1002

AV INSTRUCTIONS



When finished, touch the System Off button.



Touch the Power Down button to raise the projection screens and turn off the projectors.